



AUTOMATIC TRANSMISSION MULTI-CHANNEL REMOTE STARTER SYSTEM

CT-3300

User Guide

Introduction.....	2	Priority Door Access.....	5
Basic Remote Operation.....	2	Arming the Starter Kill.....	5
Remote-starting Your Vehicle.....	2	Installer-programmable Features.....	5
Vehicle Presets.....	2	Remote Door Locks Option.....	5
Driving Off.....	3	Ignition-controlled Door Locks Option.....	5
Idle Mode.....	3	Secure Lock Option.....	5
Valet Mode.....	3	Remote Trunk Release Option.....	5
Ignition Valet.....	3	Engine Run Time.....	6
Valet Mode Using the Valet Button.....	3	Starter Kill / Anti-Grind.....	6
Panic Mode.....	4	Multi-car Operation.....	6
Cold Weather Mode.....	4	Troubleshooting Poor Transmitting Range	
Advanced Features.....	4	Issues.....	6
Remote Door Locks.....	4		

INDUSTRY CANADA USER NOTICE:

Operation is subject to the following two conditions: (1) this device may not cause interference, and (2) this device must accept any interference, including interference that may cause undesired operation of the device. To reduce potential radio interference to other users, the antenna type and its gain should be so chosen that the equivalent isotropically radiated power (EIRP) is not more than that required for successful communication".

FCC USER NOTICE (U.S.A.):

This device complies with Part 15 of the FCC Rules. Operation is subject to the following two conditions: (1) this device may not cause harmful interference, and (2) this device must accept any interference received, including interference that may cause undesired operation.

NOTE: The manufacturer is not responsible for any radio or TV interference caused by unauthorized modifications to this equipment. Such modifications could void the user's authority to operate the equipment.

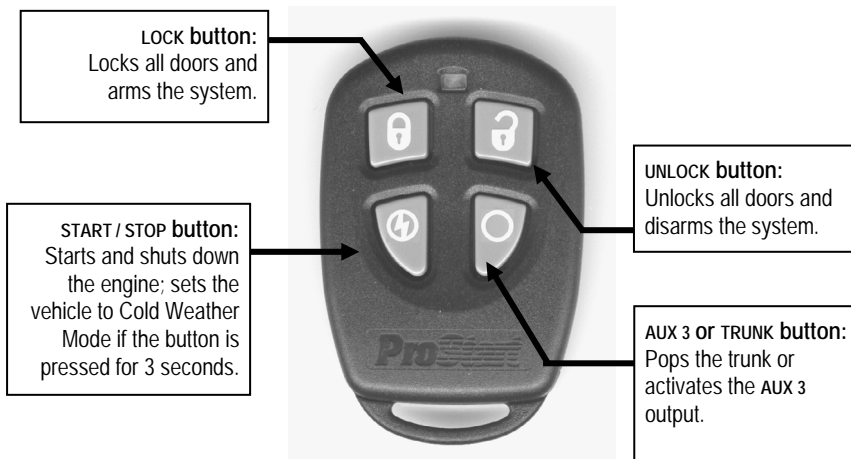
Introduction

This module is a state-of-the-art remote car starter system. With many advanced function, this product will satisfy any one of the user's expectations from high-end commodity systems, without neglecting the standard features commonly offered by entry-level starters.

Basic Remote Operation

Your remote car starter can operate two independent vehicles equipped with an identical remote car starter (see **multi-car operation** on page **Error! Bookmark not defined.**).

The functions of the transmitter are as follows:



Pressing the LOCK and UNLOCK buttons simultaneously will activate the AUX 2 output.

Remote-starting Your Vehicle

Press the START/STOP button for approx. 1 second. The parking lights will come ON, informing you that the unit has received your signal. Approx. 5 seconds later, the engine will start. The parking lights will remain on during the pre-programmed run time.

If the vehicle doesn't start the first time, the system will shut down, wait a few seconds, and try to start the engine again. It will try to start the engine 3 times before giving up.

Vehicle Presets

Heater and Heated Seat

When leaving the vehicle it is recommended to preset the accessory controls in preparation for the next remote start. Settings for the blower motor (fan), front and rear, as well as heated seats (if equipped) should not be left on High. It is recommended to leave the settings on Low or Medium instead.

Windshield Wipers, Radio and Headlights

Certain vehicles require the radio and / or windshield wiper and / or headlight circuits to become energized while running under remote start. When leaving the vehicle you must ensure that the windshield wiper and headlight switches are Off. On certain types of vehicles, leaving the headlight switch on, could cause them to remain on even after the remote starter shuts down, resulting in a dead battery.

Driving Off

With the vehicle running under remote control, press the **UNLOCK** button to disarm and unlock the doors (if installed). Enter the vehicle and do the following:

- Turn the ignition key to the **Ignition On (Run)** position.
- Press the brakes to disengage the remote starter unit.

You are now ready to drive off.

Caution: do not turn the key to the **crank** position with the engine running. This will cause the starter motor to re-engage, unless your vehicle is equipped with the start kill / anti-grind feature (optional).

Idle Mode

This feature allows the user to engage the remote starter to take over the vehicle while it is already running with the key in the **IGNITION** switch. The vehicle will keep running for the pre-programmed run time, or until it is shut down by remote.

Caution: Do not leave children or pets unattended in a car running in idle mode.

To activate Idle Mode:

To enable idle mode, press and hold the **LOCK**, **UNLOCK** or **START/STOP** button on your remote transmitter while the engine is running.

Note: When enabling idle mode, pressing **LOCK** or **UNLOCK** will automatically unlock the doors.

The parking lights will come on. Remove the key, exit the vehicle and lock the doors (if desired). The engine will continue running and will turn itself off when the pre-programmed run time expires.

Valet Mode

Ignition Valet

The system can be placed in valet mode to disable the remote starting capabilities. If the vehicle needs to be serviced, or if you park it indoors, valet mode will prevent the engine from being accidentally started by remote control.

To enter valet mode

1. With the key in the ignition switch, turn the key to the **ON (RUN/IGNITION)** and then **OFF** positions 5 times within 10 seconds.
2. The parking light will flash 3 times indicating the module is now in valet mode. The LED will turn **ON** solid.

To exit valet mode

1. With the key in the ignition switch, turn the key to the **ON (RUN/IGNITION)** and then **OFF** positions 5 times within 10 seconds.
2. The parking light will flash twice indicating the module is now out of valet mode. The led will turn **OFF**.

Valet Mode Using the Valet Button

(Available only if the plug-in valet switch is installed)

To put the system **into** valet mode:

3. Turn the key to the **Ignition On (Run)** position.
4. Press (for at least 1 second) and release the valet button.
The L.E.D. will come **ON**.

To take the system **out of** valet mode:

5. Turn the key to the **Ignition On (Run)** position.
6. Press (for at least 1 second) and release the valet button. The L.E.D. will go out.

The valet button can only be used if the vehicle keys are in the **Ignition On (Run)** position.

Panic Mode

Note: Panic mode can only be activated if the horn has been adequately configured by your installer.

In an emergency situation, you can activate panic mode using the **LOCK** or **UNLOCK** button. This will:

- Shut down the engine,
- Disarm the starter kill and
- Unlock the doors (with the **unlock** button)
- Activate the horn for 30 sec.
- Lock the doors (with the **lock** button),

Note: See the description of the starter kill option later in this guide.

To activate panic mode:

- Press and hold the **UNLOCK** button for approximately 3 sec. until the sound signal starts and the parking lights flash: this will unlock the doors before the sound signal starts.
- Or press and hold the **LOCK** button for approximately 3 seconds until the sound signal starts and the parking lights flash: this will lock the doors before the sound signal starts.

Panic mode will automatically shut down after 30 sec.

Note: To stop panic mode before the end of its delay, press the **LOCK** or **UNLOCK** button until the sound signal stops.

Cold Weather Mode

When cold weather mode is active, the engine starts every 2 hours and runs for 4 minutes (or for 20 minutes with diesel engines); the routine goes on for a period of 24 hours.

To enter cold weather mode:

- Press and hold the **START/STOP** button until the parking lights flash 3 times.

To exit cold weather mode, do any one of the following:

- Open the hood.
- Start the engine using the remote control.
- Turn the ignition key to the Ignition On (Run) position.
- Press and hold the **START/STOP** button for 3 seconds (until the parking lights flash once)
- Set the vehicle to valet mode.

Advanced Features

Remote Door Locks

If your system was installed with the remote door locks option, you will have the convenience of remote keyless entry.

To lock your doors and arm the starter kill:

7. Press and hold the **LOCK** button for approx. 1 sec.
8. The parking lights will flash once and the L.E.D. will flash slowly to confirm that the doors have been locked and that the starter kill feature is enabled if it was installed.

To unlock your doors and disarm the starter kill:

9. Press and hold the **UNLOCK** button for approx. 1 sec.
10. The parking lights will flash twice and the L.E.D. will go out to confirm that the doors have been unlocked and that the starter kill feature is disarmed if it was installed.

Note: If installed and configured in passive mode at installation, the starter kill feature will rearm automatically 60 seconds after the doors are unlocked. For that reason, you may have to unlock your doors a second time if some time elapses before you actually start the engine.

Priority Door Access

If the remote door locks option is installed on your vehicle, this safety feature allows you unlock solely the driver's door with a single press of the UNLOCK button on the transmitter; upon a second press of the UNLOCK button, all the other doors will unlock.

Arming the Starter Kill

If installed, the starter kill can be programmed to arm in active mode (will not arm automatically) or in passive mode (will arm automatically).

- To disarm the starter kill in active or passive mode, press the UNLOCK button on the transmitter. The parking lights will flash twice. (If remote door Locks were installed, this will also unlock the doors.) In passive mode, the system will automatically rearm 1 or 3 minutes after the doors were unlocked.
- To arm the starter kill in active or passive mode, press and hold the Lock button on the transmitter. The parking lights will flash once. (If remote door locks were installed, this will also lock the doors). In passive mode, the system will automatically arm 1 or 3 minutes after the engine is shut down.

Installer-programmable Features

The system was designed with flexibility and OEM integration in mind. With its programmable options, this unit can single-handedly control nearly any electrical system in your vehicle.

Note: The programming of these features should be left to a professional. Changing any one of the settings may adversely affect the operation the module.

The user-selectable options are as follows:

- Remote door locks
- Ignition-controlled door locks
- Secure lock
- Remote trunk release
- Engine run time
- Idle mode
- Starter kill / anti-grind

Remote Door Locks Option

This system can be installed with the remote door locks option.

Ignition-controlled Door Locks Option

This is an added security feature. If your system was installed with the ignition-controlled door locks option, the doors will automatically be locked as soon as the user presses the brakes while the ignition key is in the Ignition On (Run) position.

When the key is turned to the IGNITION OFF position, the doors will automatically be unlocked. (Only available if remote door lock option is installed)

Secure Lock Option

Before it can remote-start your vehicle, the module must first disarm the factory security system. The secure lock feature may be required on certain vehicle models with factory security systems that automatically unlock the doors when the security system is disarmed.

To keep your vehicle protected when the factory security system is disarmed for a remote start, secure lock will relock your doors as soon as the vehicle has started.

Once the engine run cycle ends, secure lock will rearm your factory security system.

Remote Trunk Release Option

If your system was installed with the remote trunk release, you can open your trunk by pressing the TRUNK button on the remote transmitter. Vehicles must have an electric TRUNK switch or a remote TRUNK button on the vehicle's OEM transmitter for this option to be compatible with the module.

Engine Run Time

(Gas 15 minutes, Diesel 20 minutes by default) If you have a gas engine, your system can be programmed to run the engine for 4, 15, or 25 minutes (15 minutes by default). If you have a diesel engine, it can be programmed to run the engine for 9, 20, or 30 minutes).

Starter Kill / Anti-Grind

This added security feature will immobilize your vehicle when the system is armed (LOCKED). If the system was installed with the starter kill option, you will not be able to start your vehicle with the key unless the system has been disarmed first (UNLOCKED).

The starter kill option can be programmed to be **active** (will not arm automatically) or **passive** (will arm automatically). In **passive** mode, your installer can program it to arm automatically in 1 or 3 minutes.

Once the vehicle has been remote started, the anti-grind feature prevents the starter motor from re-engaging when the ignition key is accidentally turned to the **CRANK** position.

Note: Automobile insurance companies sometimes offer a rebate for vehicles with a passive starter kill device.

Multi-car Operation

This option allows the owner of two vehicles, both equipped with the same Remote Car Starter model, to control both systems with a single remote control. To control the second vehicle, simultaneously press the **TRUNK** button and the button of the function you wish to use.

Note: Your remote control must be configured for second car operation by the installer.

- Press **TRUNK + LOCK** button simultaneously:LOCK
- Press **TRUNK + UNLOCK**:UNLOCK
- Press **TRUNK + START**:START
- Press **TRUNK + STOP**:STOP
- Press **TRUNK + LOCK + UNLOCK**:AUX 3 (TRUNK)
- Press **TRUNK + STARTSTOP** for 3 sec:Cold Weather Mode

Troubleshooting Poor Transmitting Range Issues

Many factors may affect the operating range of the transmitter. Some of these are:

- The condition of the battery in the transmitter.
- The operating environment (for example: downtown radio-frequency noise, airports, cellular phone towers...)
- Metal: any type of metal will affect operating range. This includes the metal in the car.
- The shape of the vehicle can affect range as well; vans in general have an especially poor range.
- The shape of the roof and A-pillars brings about considerable radio-frequency deflection (in this case the signal from the remote control). As a result, the direction in which the vehicle is facing in relation to the remote control can affect the range. Straight on – standing in front of the vehicle – generally gives you the greatest range; the second best performance is from the back. Using the remote control from either side of the vehicle will usually give the lowest range.
- The range will be significantly lower in a crowded parking lot than in open space.
- Always hold the transmitter high, approximately at shoulder height. Holding the transmitter against your chin will also increase your range: your head acts as an antenna.
- The operating range will be somewhat lower on vehicles equipped with an aftermarket or factory alarm.
- Windows and windshields tinted with lead or metallic tints will decrease the operating range.